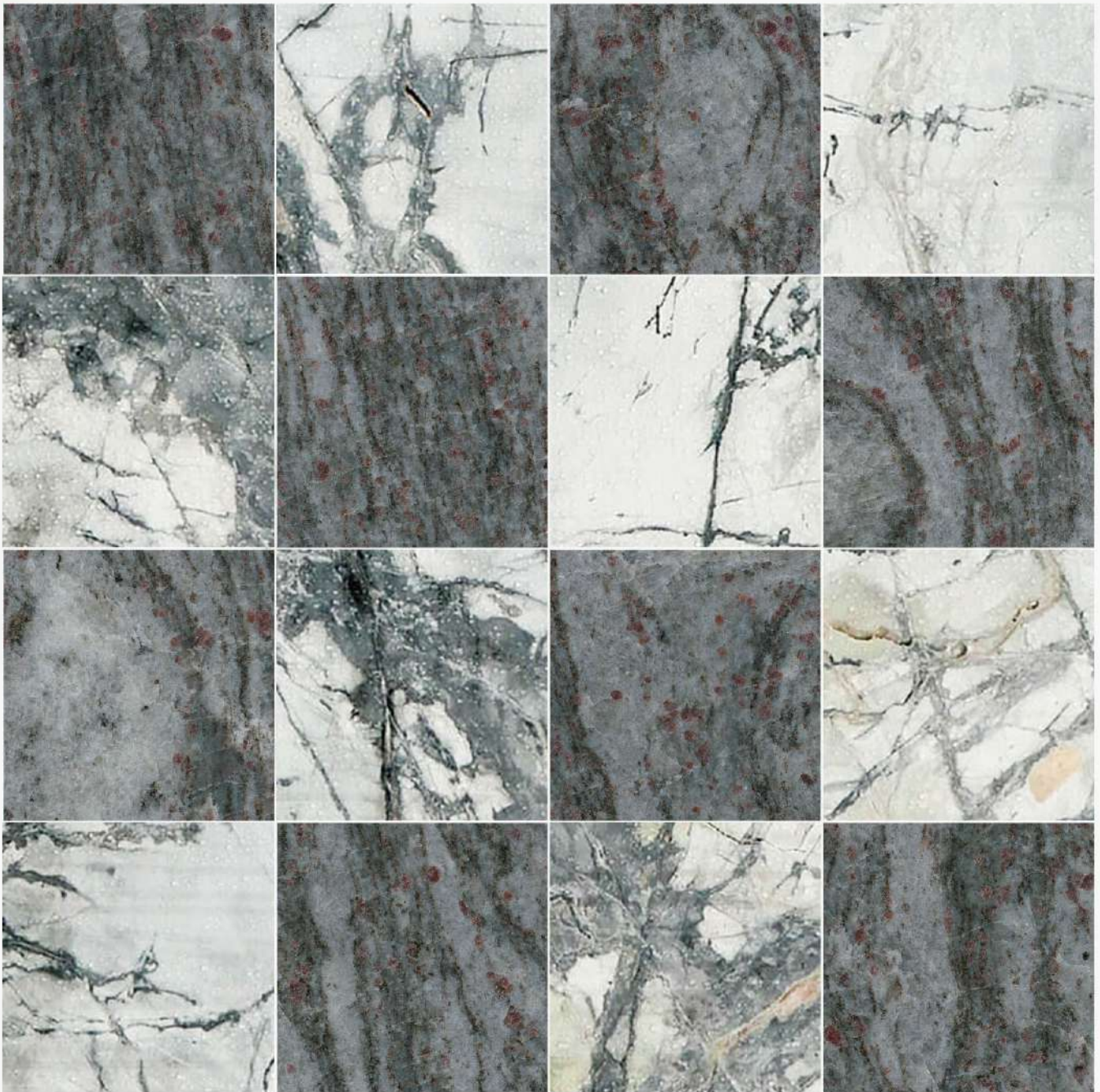


MyEnamel

Since 1992



Product Summary

ABOUT US




MyEnamel was founded in 1992. We are a professional manufacturer for enamel products. Away from traditional manual work commonly adopted in enamel industry, we invested automatic equipment such as GEMA[®] enamel static spraying system and Japan Yaskawa Robot spraying system, to maximize quality consistently. We strictly comply with standard operating procedures for all process to ensure overall quality is met.

Corporate sustainability lies in exceeding quality, so we are ISO 9002 Quality Management System certified company since 1996 to give customers overall assurance. We keep working on process automation to stay most competitive in the global market. In 2018, we invested Auto-Transfer System equipment to completely connect all production lines instead of manual transfer work to maximize product quality and increase efficiency.

In early 2019, MyEnamel further invested ceramic printer to replace traditional transfer work, which offers high resolution 400dpi enameling finish artwork. With this niche differentiating technology, we have expanded enamel application for various industries like architectural, advertising, home décor, and furniture etc., which enhances our overall competitiveness.

ENAMEL FEATURES



Climate-Resistant

Moisture, wind, temperature changes, and acid rain and other pollutants in the air can cause corrosive damages to construction materials. The test result shows enamel features in long-life, anti-corrosion, color-lasting especially in outdoor environment.




Corrosion-Resistant

Well-known as excellent climate-resistance to stand corrosion of acid, alkali, salt, oil and chemicals. Easy-cleaning and maintenance is one of major advantages standing out from any other materials especially in construction industry.



Fire-Resistant

The enamel wall panel is made from two noncombustible materials - **enamel and metallic panels** - and thus provides comprehensive protection against fire.



Beautiful

Artworks like wood grain, marble and granite are unique enameling applications instead of using physical materials with concern of environmental-friendly thought. Enjoy vivid-looking and touch of wood or marble while conserving the resources of our earth.



Design

The enamel panel is widely available in customized shape, artwork, color and easy-for-construction. No matter what applications it refers, the delicate touch and texture of enameling always add elegant and high quality level to products.



Economical

Enamel wall panels are light-weighted construction material suitable for buildings and public construction. The overall cost is most economical when all advantages are taking into account - easy construction, less manpower, and low cleaning and maintenance cost.

Products – Architecture



Wall panel_MyEnemal

Ceiling
Chung Tai Chan Monastery in Taiwan



Stainless steel enamel

Products – Architecture



Before

Canopy

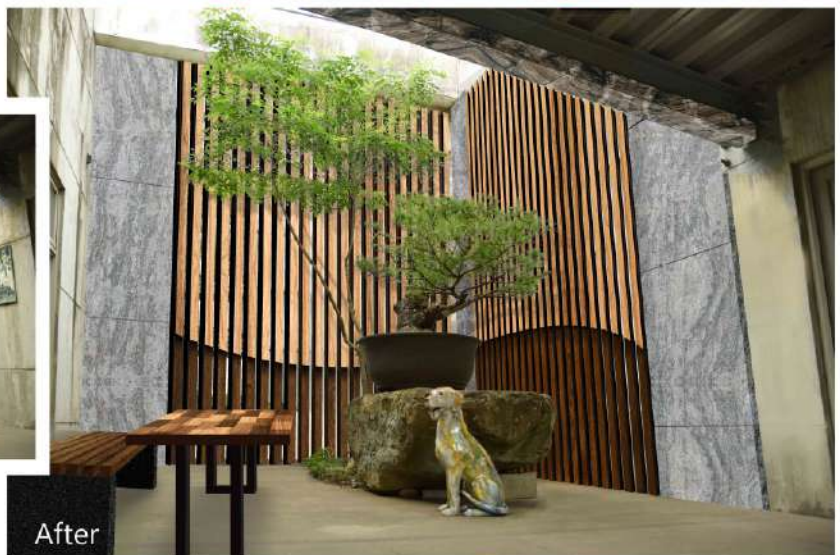


After



Before

Grid and Joist



After



Before

Building pillars



After

Products – Home appliance



Kitchen Cabinet



The advantages of enamel, waterproof, anti-fouling and Fire-Resistant are applied to kitchens. It is not only practical, but also fashionable and beautiful.



Washing table Sink

Antifouling Panel

Products – Home appliance



Casting Cookware

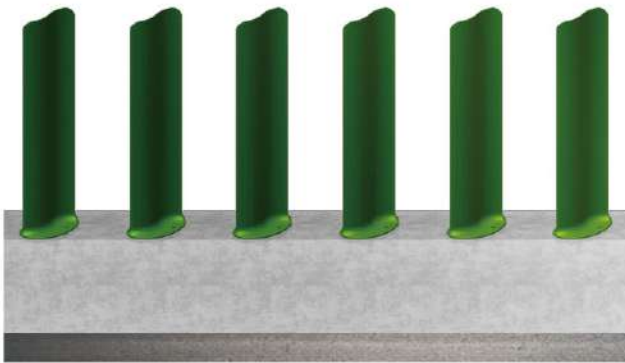


Grate

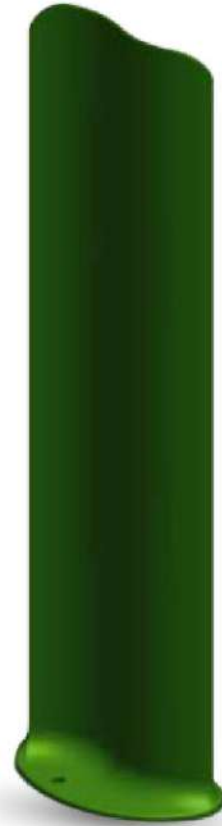


Table

Products – Traffic



Anti-glare Panel



Reflective Traffic Mark

Products – Traffic



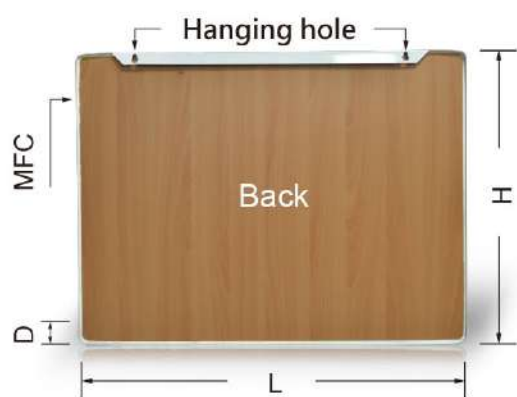
Sign for toilet



Guideboard



World Map –Standard



Specification	Dimension
M	L890 x W670 x D30 mm
L	L1350 x W860 x D40 mm

※Measure difference ± 1-2% °



Glossy surface can be used as white-board and use dry cloth to wipe without stain left

Patented Enamel Time Zone clock assembled.
Rotate the clock to local time for knowing exact time of the other time zones.

Products – Education supplies



School



Meeting



Public spaces



Magnetic function used for memo or travel pins reminder.

Products – Education supplies



Terrain



Ocean



Painted



Animated Animal



Ocean map – boy



Ocean map – girl



Road and car



Drawing board-Forest



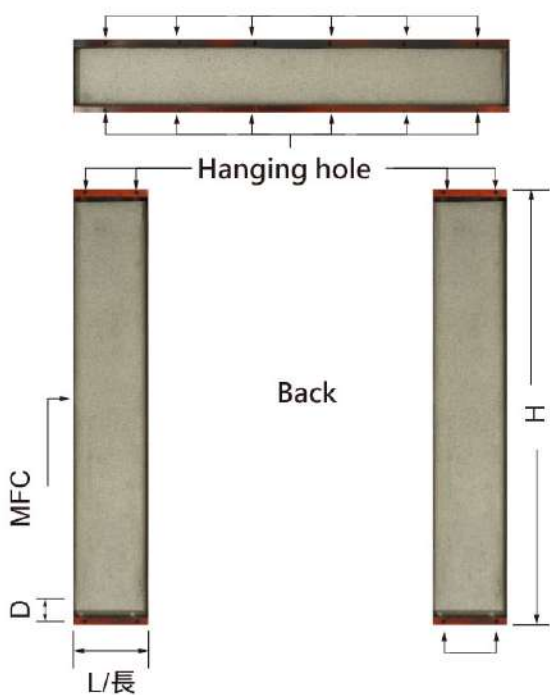
Drawing board-Maze



Line drawing



Spring couplets



Specification	Dimension
M	L200 x H1330 x D30 mm
L	L280 x H1550 x D30 mm

※Measure difference ± 1-2% 。



MyEnamel

JIH SHIN ENAMEL CO., LTD.

Tel: 886-4-2659-5278 www.myenamel.com.tw
Fax: 886-4-2659-5237 E-mail: jihshin@myenamel.com.tw